

Technical BULLETIN

©2006 YAMAHA MOTOR CORPORATION, USA

1999~2005 YZF-R6 and 2004~2005 FZ6

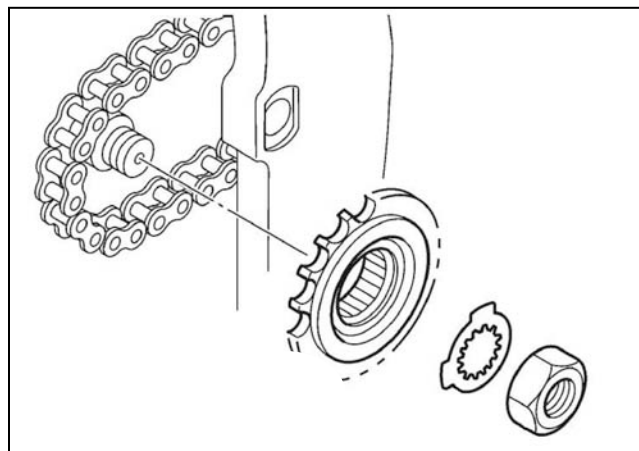
Drive Sprocket Retaining Nut and Lock Washer Replacement



INTRODUCTION

Symptom: In some cases, the drive sprocket retaining nut lock washer can allow the nut to rotate just enough to reduce the clamping force resulting in fretting the drive sprocket retaining nut and lock washer.

Remedy: Replace the drive sprocket retaining nut and lock washer on all units in the affected range regardless of their warranty status.



DEALER ACTION SUMMARY

Unsold

Units: Replace the drive sprocket retaining nut and lock washer on all unsold units in the affected range during Predelivery Inspection (PDI).

Sold

Units: Replace the drive sprocket retaining nut and lock washer when an affected unit is in for regular maintenance or trade in.

Parts

Required: Yes. Order one Drive Sprocket Kit per affected unit (see *Parts Information* section, page 2).

Warranty: Submit a Service-Per-Bulletin (90 Code) Warranty Request for parts and labor for the drive sprocket retaining nut and lock washer replacement.



AFFECTED RANGE

1999~2005 YZF-R6: RJ04E-0000015~0028429
RJ04Y-0000006~0002931

RJ06E-0000012~0030477
RJ06Y-0000004~0006432

2004~2005 FZ6: RJ08E-0000005~0005165
RJ08Y-0000003~0000810

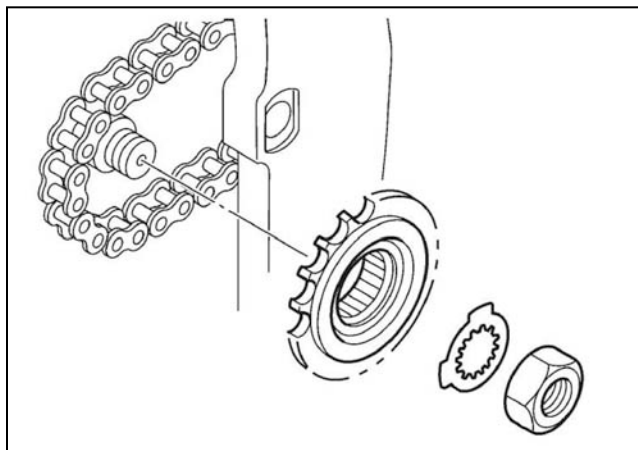
NOTE: Production models, after the affected range, already have the Drive Sprocket Kit installed from the factory.



SERVICE PROCEDURES

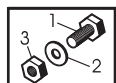
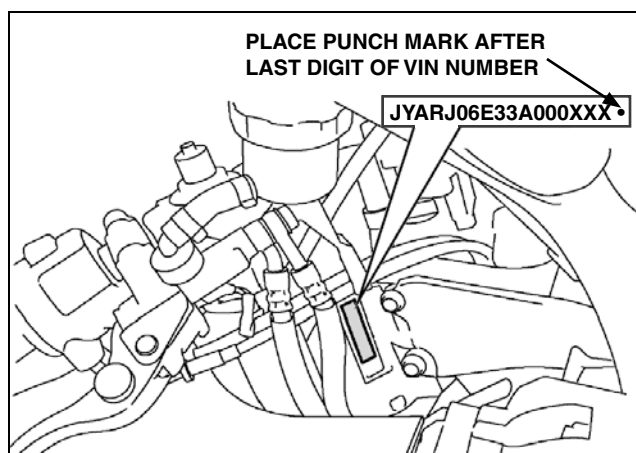
Perform the following procedure:

1. Refer to the appropriate Service Manual for accessing the drive sprocket retaining nut.
2. Fold the lock washer away from the drive sprocket retaining nut and remove the retaining nut and lock washer.
3. Clean all traces of grease and debris from the threads of the main axle.
4. Apply Loctite® 620 to the threads and install the new lock washer and retaining nut from the Drive Sprocket Kit. Tighten the drive sprocket retaining nut to 90Nm (9.0m·kg, 65 ft·lb).
5. Fold the lock washer at two points securely against the drive sprocket retaining nut.
6. Refer to the appropriate Service Manual for re-assembly.



IDENTIFICATION PROCEDURE

After modifying a unit, make a punch mark to the right of the frame number (VIN) on the frame as shown in the illustration. If you encounter an unfamiliar unit, check first for this mark before performing the procedures. Unit status is also available on YDS or by calling your RTA.



PARTS INFORMATION

Part Number	Part Name	Qty.	Dealer Cost
90891-10124-00	Drive Sprocket Kit <ul style="list-style-type: none">• Drive Sprocket Retaining Nut• Lock Washer	1 Kit 1 1	\$4.22



WARRANTY INFORMATION

Service of all affected units is authorized regardless of warranty status.

To receive credit for parts and labor for the drive sprocket retaining nut and lock washer unit replacement, select **90TH** from the Problem Code pull down menu in the Yamaha Dealer System (YDS). If submitting a standard warranty claim use Problem Code **90TH**. The labor allowance is **0.6** hour for YZF-R6 and **0.4** hour for FZ6.

ROUTE TO: ☒ SERVICE ☒ PARTS ☒ WARRANTY ☒ SALES